

INNOVATE 2028

TRANSFORMING
URBAN COMMUNITIES



Southbank Partners was founded in 1997 as an economic development organization serving a few river cities. Today, we partner with nine cities that represent the urban core of Northern Kentucky.



WHAT IS SOUTHBANK PARTNERS?

A nonprofit regional economic development and place management organization representing a partnership of cities achieve their economic development goals.

OUR ROLES

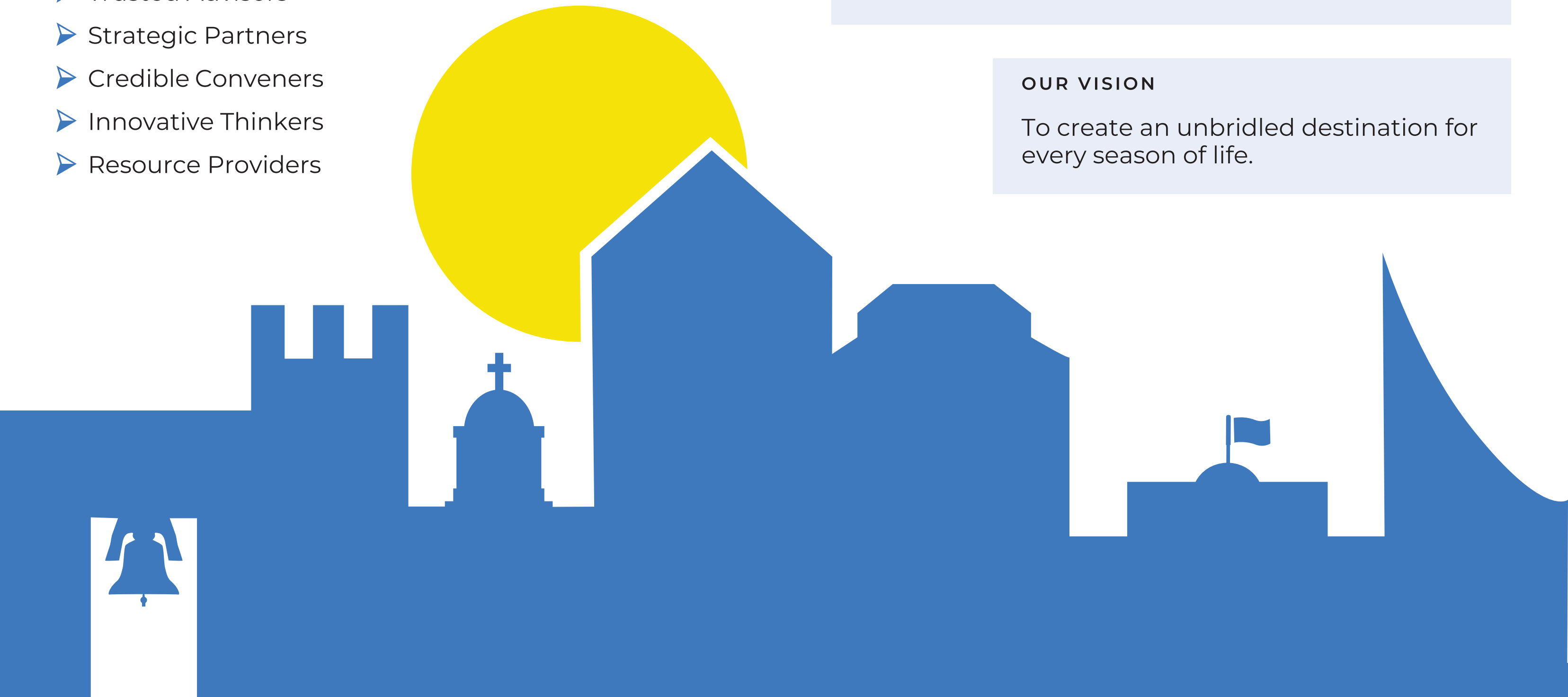
- ▶ Trusted Advisors
- ▶ Strategic Partners
- ▶ Credible Conveners
- ▶ Innovative Thinkers
- ▶ Resource Providers

OUR MISSION

To promote and coordinate economic development for the creation of connected communities, vibrant riverfronts, and resilient downtowns by facilitating collaboration, bringing vision to reality, and providing a unified voice to represent the common needs and interest of our partnering cities.

OUR VISION

To create an unbridled destination for every season of life.

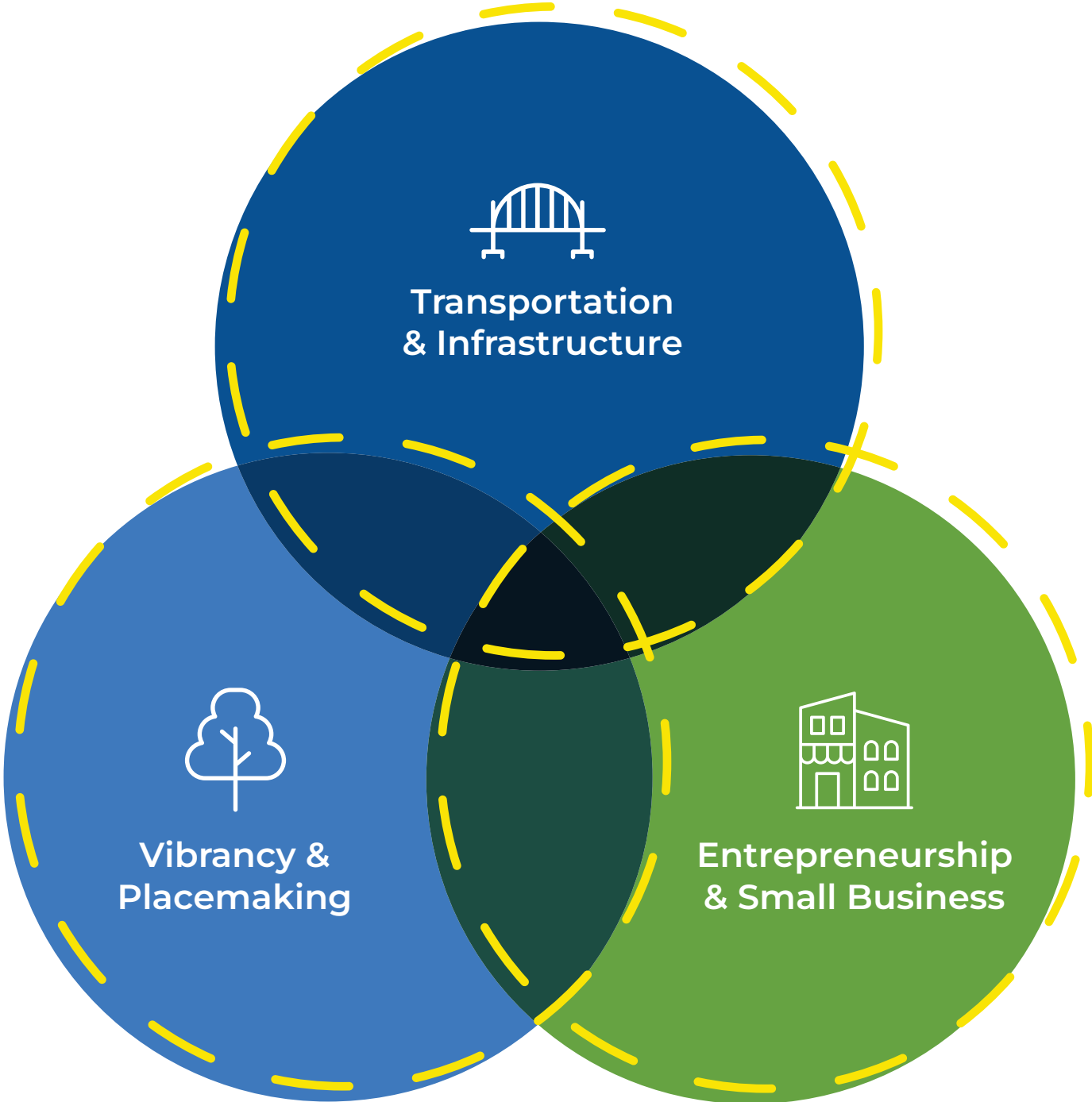
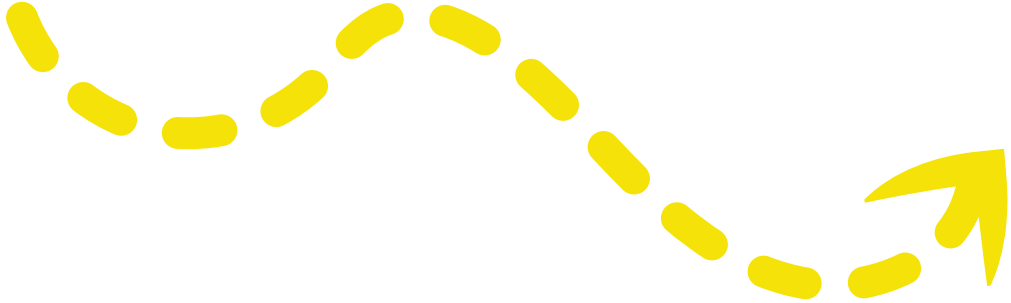


For over 25 years, Southbank Partners collaborated with our partners to revitalize the river cities.

With the successful completion of the Imagination 2020 plan, we are excited to continue this momentum into a bold new chapter focusing on riverfronts, downtowns, and regional corridors.

Join us from river city revitalization to urban transformation in our new strategic plan, Innovate 2028.

WILL WEBER
SOUTHBANK PARTNERS PRESIDENT & CEO





Transportation & Infrastructure

Lead multi-modal interconnectivity projects between the cities

- Build the Riverwalk as part of Riverfront Commons, a 20-mile world class active destination along the Ohio River
- Complete the original Riverwalk path by 2026
- Complete the western and eastern bookends by 2030

Prioritize greenways and blueways as the new “human highways” for urban cities

- Market and promote the Riverwalk as a safe, reliable, and essential transportation system for all walks of life
- Connect to regional destinations, city parks, and paved/ nonpaved trails

Advocate for modernized transportation facilities and assets including:

- Transition from time based to active demand management systems
- Replace and upgrade bridges
- Fund the rehabilitation of roads

Support multi-modal transportation connectivity throughout the urban core

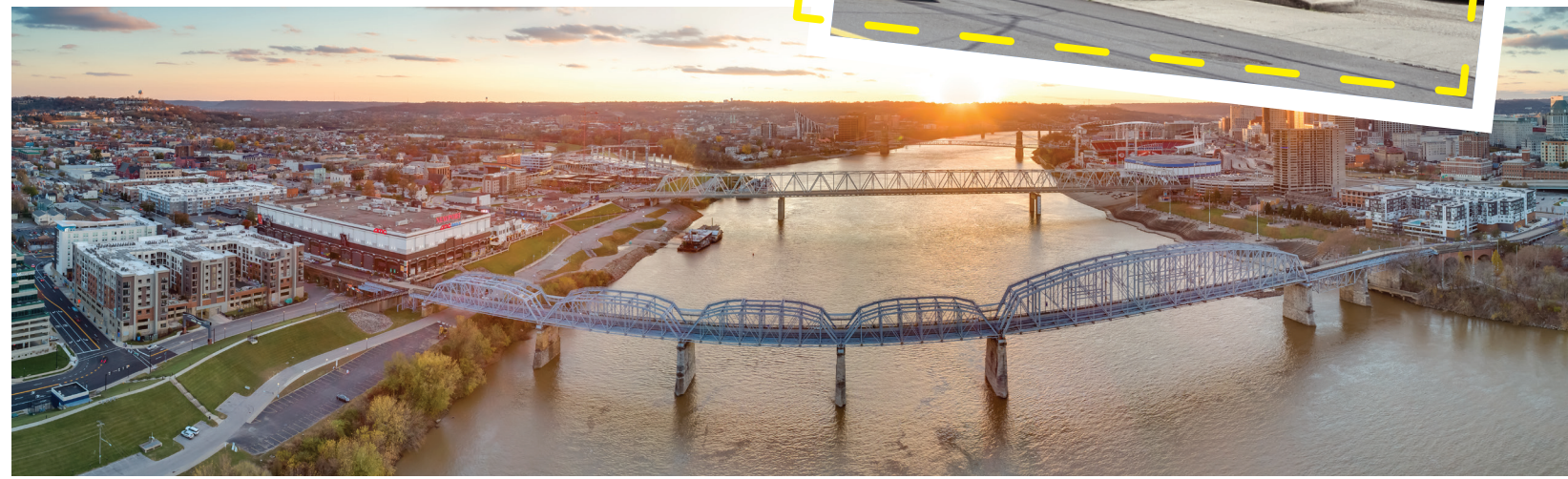
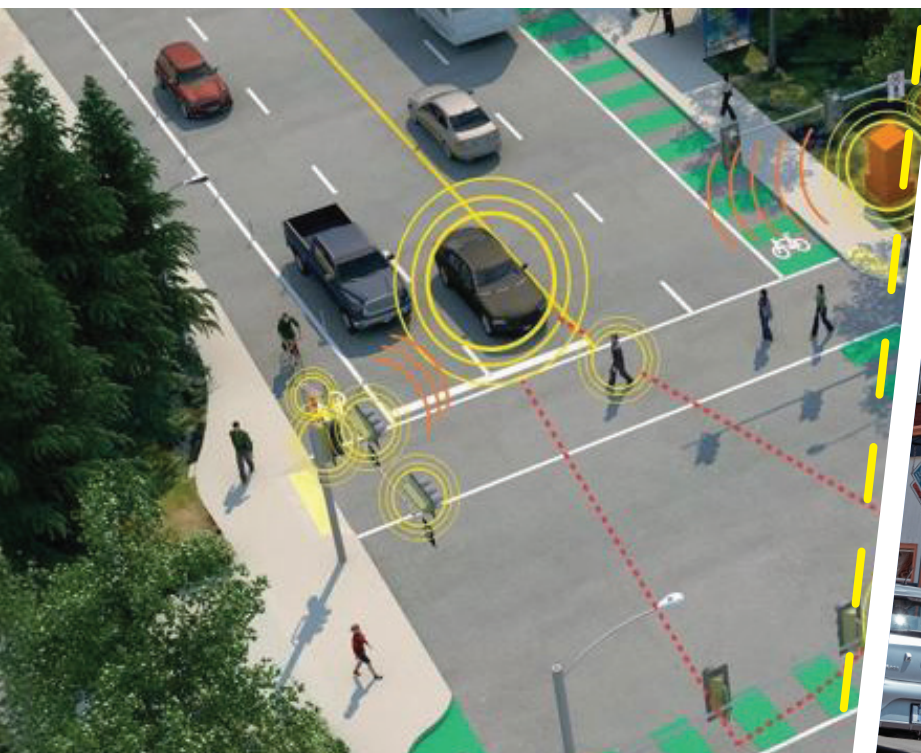
- Assess the future and long-term sustainability of public transportation such as the Southbank Shuttle
- Consolidate and upgrade TANK bus stops
- Expand private multi-modal transportation options

Upgrade infrastructure for continued growth

- Integrate EV Charging stations in key destination areas
- Create a regional infrastructure plan for the urban core

Mitigate, Prevent, and Manage the impacts of flooding

- Improve watershed work, studies, and data collection
- Identify funding for solutions that reduce the risk of development in floodplains



Vibrancy & Placemaking

Embrace technology in the public right-of-way to create smart cities, corridors, and communities that serve people and solve problems

Create US-27 Smart Corridor (27SC) – a 6-mile corridor from Newport to Highland Heights along US-27 utilizing strategic smart technology solutions

Create and enhance third places and green spaces

Assist with gateway signage specific to the identity of each City area
Promote business districts and mixed-use developments
Support creative placemaking efforts (i.e., Purple People Bridge)
Showcase active and passive outdoor recreation assets

Activate underutilized spaces

Showcase the identity of the community at the intersection of history, culture, and entertainment that bring the community together
Encourage interaction where it otherwise would be an afterthought (i.e., flood walls, water tanks, and alleys)



Entrepreneurship & Small Business

Encourage investment and development in the region

- Promote the areas for new and expanding small businesses
- Convene conversations and facilitate teamwork across city limits

Cultivate a multi-faceted ecosystem for entrepreneurs to grow and stay

- Create a Northern Kentucky Scale-Up Ecosystem with regional partners

Connect small businesses with resources

- Collaborate with service providers to assist growing small businesses
- Create an entrepreneurship support asset map and direct small businesses to the appropriate resource

THANK YOU TO OUR
DEDICATED BOARD OF DIRECTORS

Jay Buchert

*Founder &
President of
American Heritage
Construction &
Development Corp.*

Robert Simmons

*Senior Vice
President at EGC
Construction*

Donna Salyers

*Founder &
President of
Donna Salyers
Fabulous-Furs*

Tom Guidugli Sr.

*Executive Director
of Newport
Neighborhood
Foundations*

Ken Lewis

*Founder & Co-
Owner of New
Riff Distilling*

Mike Chilelli

*Founder &
Owner of MC
Steel & Crane*



www.SouthbankPartners.com